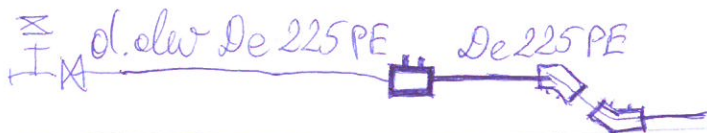


Tähe tn veesõlmed 1/2

V-1



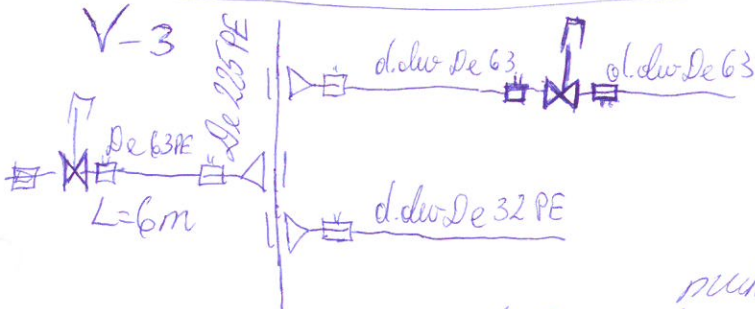
El. keermukuv De 225 PE
El. keermukuv De 225 PE 45°
mp. 42,73 toru 39,94 h=2,8m

V-2



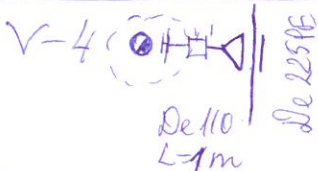
El. keermukuv De 225/90;
El. keermukuv 90/75;
El. keermukuv De 75;
h=2,4m

V-3



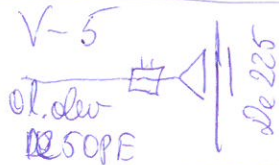
El. keermukuv De 225/63;
mukuv De 63 PE;
Maaäär DN 50 PE otstega
koos el. keermukuvidega.
El. keermukuv De 225/63;
mukuv De 63; Maaäär DN 50 PE
otstega koos el. keermukuvidega. ühendumuk
El. keermukuv De 225/32; mukuv De 32;

112" torustoruga;



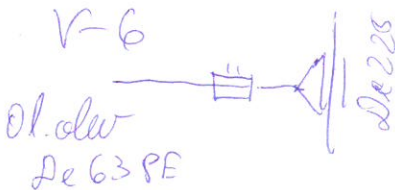
El. keermukuv De 225/110;
El. keermukuv komplekt;
Maa-äärne tuletõrjekahvut; liuk+TH mäek;
mp. 42,86 toru 40,56 h=2,3m

V-5



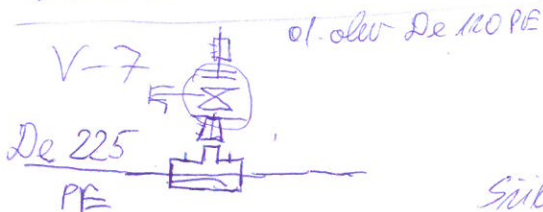
El. keermukuv De 225/63; üleminek 63/50;

V-6



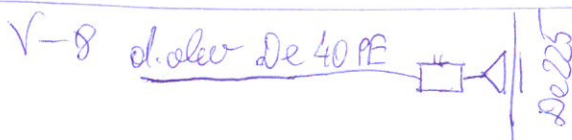
El. keermukuv De 225/63; mukuv 63;

V-7



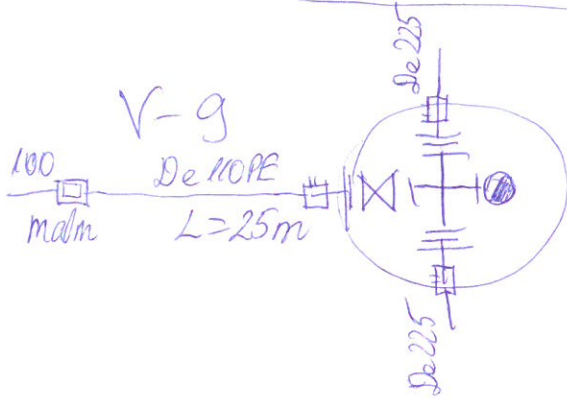
El. keermukuv De 225 PE
El. keermukuv De 225/110;
El. keermukuv komplekt De 110 PE 2 tük;
Suiber DN 100 + 9 tük + teleskoop 315mm, liuk
kirjega "VESI"; ühendumuk De 110 PE-ga.

V-8

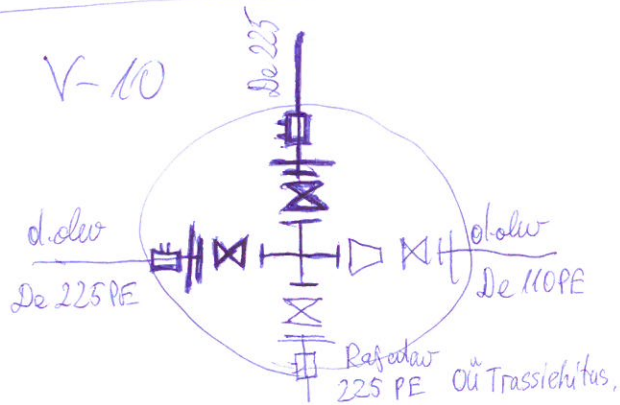


El. keermukuv De 225/40;
mukuv De 40;

Tähe tr veeõlmed 2/2



Rafader sekaar-De 1500 r/b
 Äärikutega malmelike 200/100;
 Süber DN 100; Tuletõõjekuudraut;
 El. keeviskaelus De 225 PE 2 komplekti;
 El. keeviskaelus De 110 PE 1 komplekti;
 Tõmbekindl talerantornu DN 100 malm/m



Süber DN 200 2 tk;
 El. keeviskaelus De 225 PE 2 komplekti

Rafader kaar ja sõlm on
 OÜ Trassiehitus tööde mahus,

KAMBJA VALD
 SOINASTE KÜLA