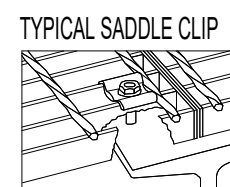


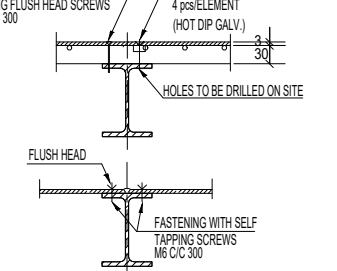
STRUCTURAL STEEL		info 1	info 2
Apply/cite execution standard:			EN 1090-2
Apply/cite Project Specification:		TT3-0173-9704	Project specific requirements
Execution, acceptance criteria:		EXC2	Main steel frame and secondary structures
- EN 1090-2 (Annex A.3)			
Welding work, acceptance criteria:		C	Steel structures
- EN ISO 5817			
Geometrical Tolerances:		Essential tolerances	Annex D.1
- EN 1090-2 (Annex D)		Functional tolerances Annex D	Class 1 in general
		Functional special tolerances	see Project Specification
Fire resistance requirement			No requirements
-EN 13501-2			No requirements
MATERIALS		grade	standard
-Hot rolled H and I sections		S355J2	EN 10025-2
-Hot rolled C and L sections		S235JR	EN 10025-2
-Welded built up sections		S355J2	EN 10025-2
-Hot finished hollow sections		S355J2H	EN 10210-1
-Cold formed hollow sections		S355J2H	EN 10219-1
-Plates in connections		S355J2-N	EN 10025-2
-Structural Stainless Steel		1.4307	EN 10088-2
CONNECTIONS			
Fasteners in steel connections:		grade	Dimensional standard
Bolts	M20..M30	8.8 / EN ISO 898-1	EN ISO 4014
Bolts	M12..M16	8.8 / EN ISO 898-1	EN ISO 4017
Nuts	M12..M30	8 / EN ISO 898-2	EN ISO 4032
Washers	M24..M30	200HV	ISO 7089
Washers	M12..M20	200HV	ISO 7089
Bolts in preloaded connections	M24..M30	10.9 / EN ISO 898-1	EN 14399-3 (HR)
Nuts in preloaded connections	M24..M30	10 / EN ISO 898-2	EN 14399-3
Washer in preloaded connections	M24..M30	HV300	EN 14399-5
Tightening of bolted connections:			
Non-preloaded bolts		EN 1090-2 (Section 8.3)	
Preloaded bolts		EN 1090-2 (Section 8.5)	
Marking of preloaded bolts:		MoE+length+PRE	
Fastening to concrete:			
-Drilled anchorage		8.8 / EN ISO 898-1	HLTI HVU + HAS-(E/F), hot dip galvanized
-Embedded fastenings		1.4307 / EN 10088-2	Stainless connection plate in concrete

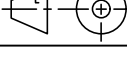
- GRATING 30x33x50 LT-TYPE WITH SAFETY MESH, STEPS LT-TYPE (SKID PROTECTED), HOT DIP GALVANIZED IN ACC. TO EN ISO 1461
- FIXING TO THE BEAMS BY SADDLE CLIP FASTENERS AND HOT DIP GALVANIZED SCREWS 4 pcs/m2
- 2 min 4 pcs/GRATING ELEMENT
- EDGE STEEL REQUIRED TO PREVENT LONGITUDINAL OVERLAPPING SLIDING OF THE GRATING
- GRATING SHALL NOT BE FASTENED BY WELDING
- GRATINGS AND STEPS WITH SKID PROTECTION
- GRATING STEPS WITH SAFETY NOSING
- FLOOR PLATE t=3mm, FIXING ON TOP OF GRATING BY COUNTER HEAD SCREWS DIN716
- FLOOR PLATE t=6 mm, FIXING ON TOP OF BEAM BY COUNTER HEAD SCREWS DIN716
- FLOOR PLATE SEALING AS REQUIRED IN PROJECT SPECIFICATION



MARKS ON THE DRAWING LEGEND :

- FIXED RAILING ACC.TO DETAIL
- REMOVABLE RAILING, ELEMENT NUMBER NOTED
- KICKPLATE WELDED TO GRATING
- GRATING OR FLOORPLATE
- GRATING, LOAD BEARING DIRECTION
- SPECIAL RAILINGS ACC.TO ASSEMBLY DWGS



Mark	No.	Date	Name	Approved	Revision						
01		21.02.19	ASKU	KKY	UPDATED						
ITEM	DOCUMENT ID	POS	QUANT	DESCRIPTION	DESIGNATION/DIMENSIONS/MATERIAL/DRAWING				NET WEIGHT TIT ABT KG		
	SURFACE ROUGHNESS	GENERAL TOLERANCES FOR MECHANICAL CONSTRUCTIONS			GENERAL QUALITY LEVEL WELDED JOINTS	ISO 5817 - C	WELD SYMBOLS	ISO 2553	JOINT PREPARATION UNLESS SPECIFIED	ISO 9692	WELD CONSUMABLES UNLESS SPECIFIED
	Re μm	ISO 2768 - m, K	ISO 13920 - B, F								DOCUMENT
CUSTOMER NAME Valmet Burgo Andrennes LOCATION OF MILL Virton, Belgium					CUSTOMER'S DRWG. NUM.		FILE POR1069661	SYSTEM AutoCAD			
CUSTOMER'S POS. NUM.					SCALE 1:50		DRAWN ASKU	DATE 1.12.2018			
QUOT. NUM. / PROJECT NUM. ATA087		LANGUAGES EN / FI				CHECKED TOUL	DATE 1.12.2018				
TITLE Batch Cooking							APPROVED KKY	DATE 1.12.2018			
LOF, service platforms, general structures							DOCUMENT ID		SHEET		
REASON FOR ISSUE							POR1069661		REVISION 01		