


# Cover Sheet

## Revision List

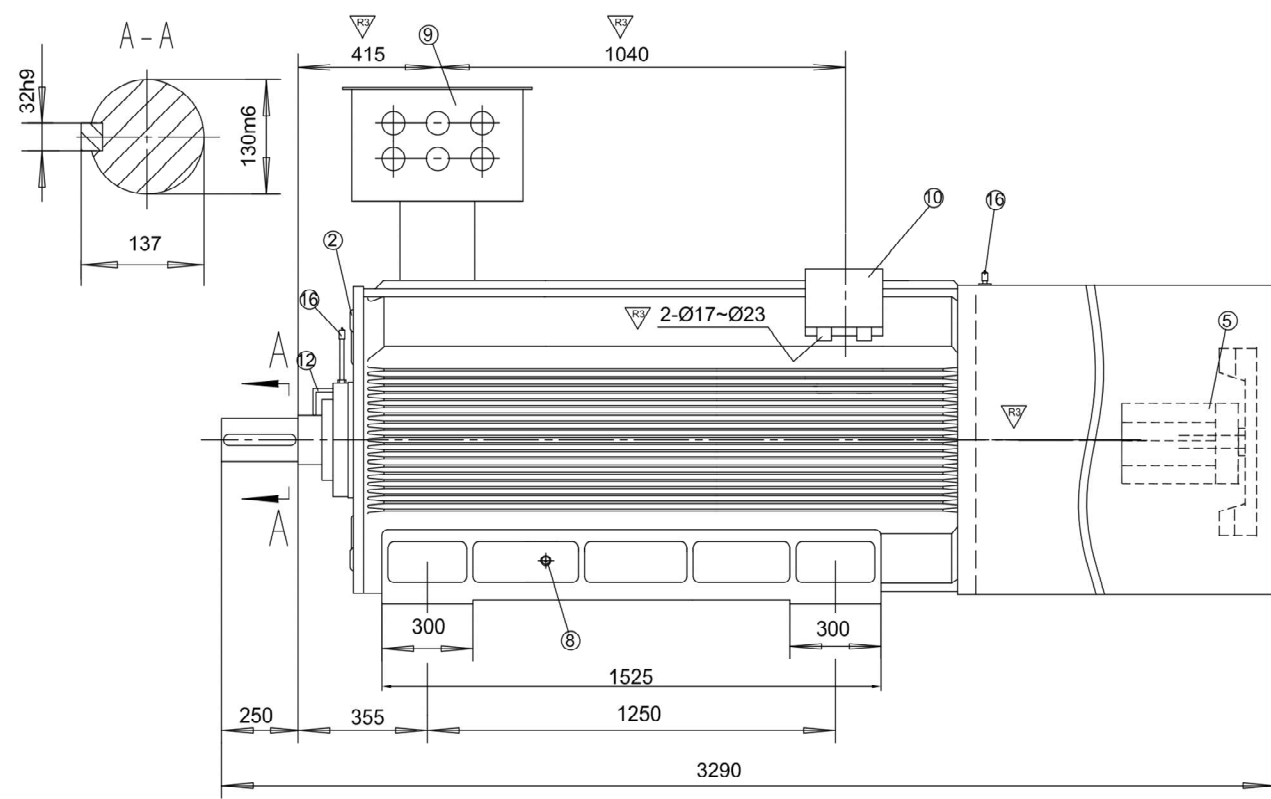
This sheet is the cover sheet for all subsequent sheets having the same document numbers. The revision index and a brief description of the revision shall be entered on the cover sheet. The last revision index shall be added to the document number on the cover sheet and equally applies to all sheets having that document number. The new revision index is shown on all sheets.

### Table of Contents

Title	Document No:	Pages	Rev
Outline Drawing	930016.101.MB-3	1	02
Finaly Assembly	Sheet 6/6 YBFJ500-6 850 kW	1	

Rev.	Name	Date	Name	Name	Date	Status	Kind of Revision
	Prepared/Changed		Checked		Released		
0	Krantz	09.04.2011	Stahleisen			FI	First Issue
 <b>Outotec GmbH</b>		Plant		EOG		Copying of this document, and disclosure of it to others and the use or communication of the contents thereof, are forbidden without express written authority by Outotec GmbH. Offenders are liable to the payment of damages. All rights are reserved in the event of the grant of a patent or the registration of a utility model or design.	
		Module		JL01			
Assembly		GQ013					
Component		MA01					
		DG	Eng.Serv.-No.			Eng.Serv.-Title	
Original Size		Scale		<b>ESTI ENERGIA</b> <b>Ash Cooler Air Blower 2</b>  <b>Type: YBFJ 500-6 850 kW</b>			
A 4							
DCC		Basis document					

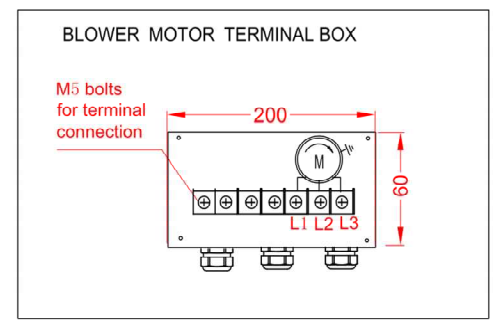
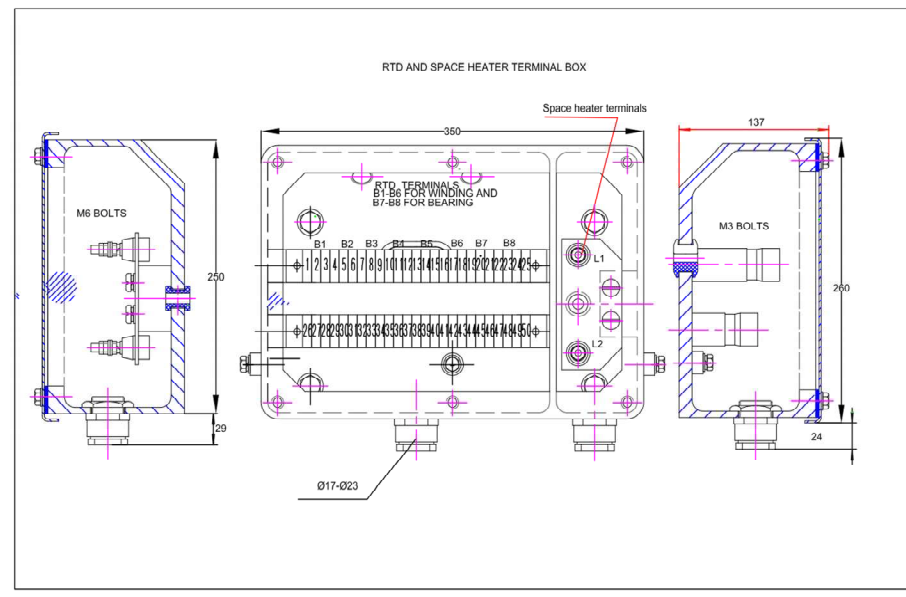
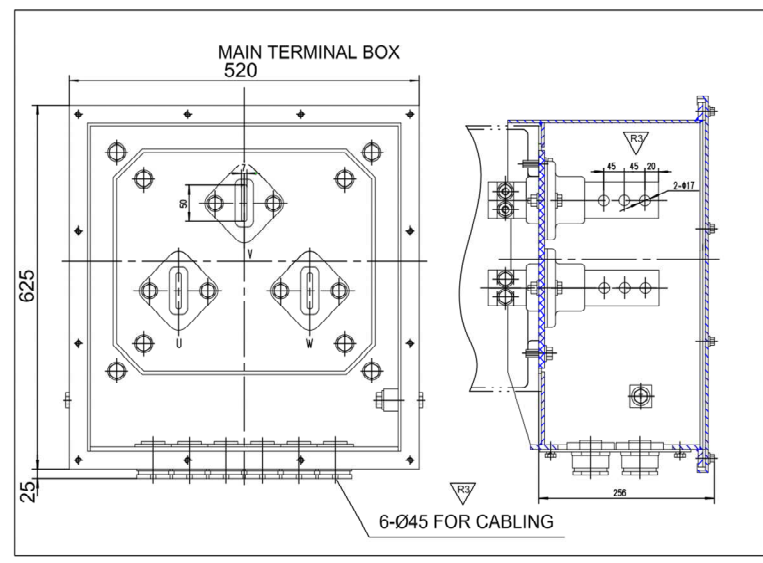
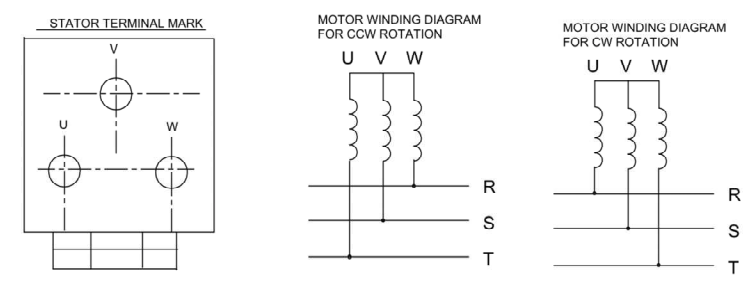
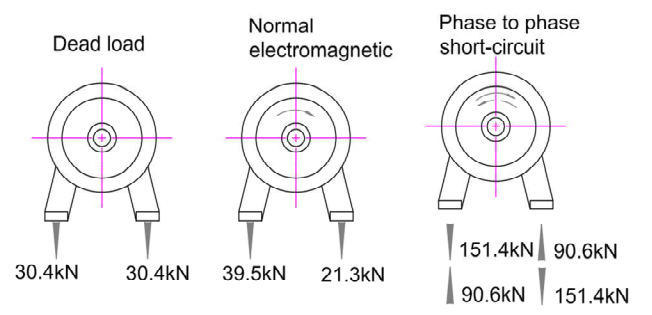
Job name:	Job No.	Document No.	Page:	Rev.
<b>EOG NARVA</b>	<b>1064-I3</b>	<b>07029</b>	1 of 1	<b>0</b>
EDP-Ident-No.: S:\1064\1064-I3\10_SupplierDocuments\02_Elec_Inst\690V drives Convertteam\End Doku\05_JL01-GQ013 Ash Cooler Air Blower 2\Chapter_5_Motor MA01\00_1064-I3_07029_R0_Motor Docu.doc, Printed: 02.11.2011				



- ① Direction of rotation
- ② Bearing RTD.(2\*Pt100)
- ③ Space heater.(1ph, 50hz,230V, 600W)
- ④ N/A
- ⑤ Motor blower (3 Ph 50 Hz, 400 V,5.5 kW).
- ⑥ Motor lifting lug.
- ⑦ (4-Ø42)Hole for motor fixing
- ⑧ Ground clamp.(2-M12)
- ⑨ Main terminal box.
- ⑩ RTD's and space heater terminal box.
- ⑪ Motor blower terminal box.
- ⑫ Grounding brush
- ⑬ terminal box for Encoder (supplied by others).
- ⑭ Vertical jacking screws 2-M24
- ⑮ adding grease inlet

Remark : This motor use SKF roller bearing and the lubricant of motor bearing is grease and insulated for non-divien end.

▽ Loads on foundation on each side of rest



VARIABLE FREQUENCY MOTOR CHARACTERISTIC DATA (SINGLE WINDING)		
Type: YBFJ500-6	Base speed: 994rpm	Speed range:0-1000RPM
Construction form:TEFC	EFF.: 95.7% ▽	PF: 0.836 ▽
Degree of protection: IP54	Max. torque/Rated torque at base speed :2.0	
Cooling system: IC416	overload : 150% for 5 minute per 1 hour	
Power:850KW	INERTIA OF ROTOR J=85KGM2	INSULATION/OVER-TEMP. CLASS: F/B
Voltage: 660V	ROTATION: Bi-directional	CONNECTION: ▽
Current:929A ▽	STANDARD: IEC60034-9	Colour: RAL 9007 Finish coat for maritime climate conditions
Frequency: 50HZ	Rotor mass: 2100kg	Stator mass: 3400kg ▽ Motor mass: 6200kg
	LUBRICATION OIL	Other accessory part
	Bearing type: SKF roller	Fan for cooler: 1sets 5.5kW 400V 50Hz 11A ▽
	DE Bearing:NU228EC3/C3	Space heater 600W 230V 50hz 2.5A ▽
	NDE Bearing: 6228/C3VL2071	Temp. indicaror : Pt100
	Lubrication: 3# Li grease	2 pcs for bearings <b>6 pcs for winding</b>
	Encoder: N/A ▽	
	Brake:N/A	

COPYRIGHT RESERVED ACC. DIN ISO 16016

/ last part of folder structure/  
type / title

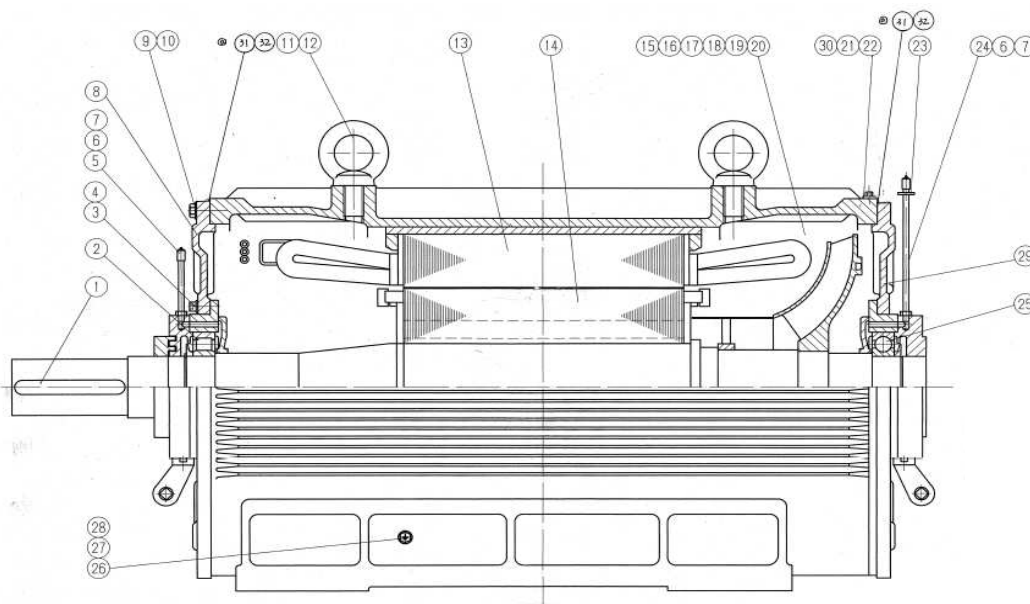
Date	20.04.2010
Comm.	G. Krantz
02 as build	02.03.2011
GKr	Check.
H. Stahleisen	
No.	Revision
1	Date
2	Name
3	Stand.
4	Orig.
5	Subst.

**Outotec**

**CONVERTEAM**  
THE POWER CONVERSION COMPANY

EOG Narva  
JL01-GQ012-MA01  
JL01-GQ013-MA01

Ash Cooler Air Blower 1+2 850 kW	=
930016.101.MB-3.02	+
	Sheet 6/6



No.	Description	Measures	Number of items
1	Key		1
2	Bearing		1
3	---		---
4	---		---
5	Grease tube		1
6	Grease nipple	M10x1	2
7	Connector		2
8	End bracket		1
9	Zn Screw	M20X60	16
10	Spring washer	20,4 x 2,2	16
11	Eye bolt	DJDH(6-8)T	2
12	Zn Coted bolt	M36x50	2
13	Stator		1
14	Rotor		1
15	Space heater		1
16	Name plate data		1
17	Name plate Assembly		1
18	(auxilliary)Outlet box		1
19	Wiring diagram		1
20	Bearing monitoring device		1
21	Zn Coted bolt	M12x45	4
22	Spring Washer	12,2x1,5	4
23	Baffle		1
24	Tube		1
25	Bearing		1
26	Zn Grounding bolt	M12x25	2
27	Zn Washer	M12	4
28	Zn Spring washer	M12	2
29	End bracket		1
30	Rubber Sleeve		1