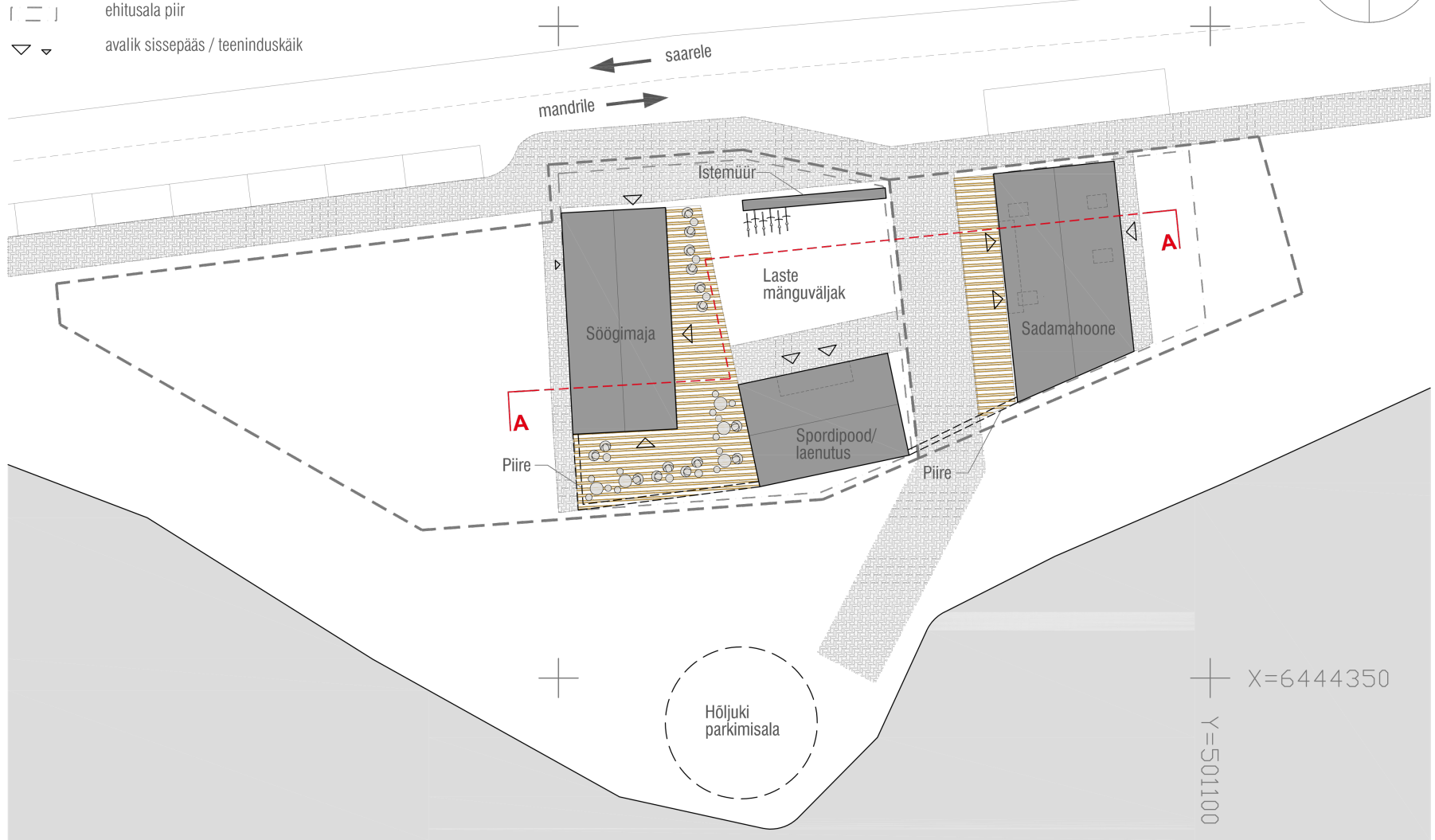
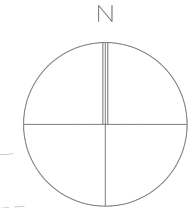


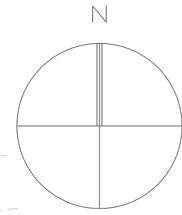
## **Kihnu saarel Suaru sadamakompleksi esialgne eskiislahendus**

16.märts 2012



-  uued hooned
-  terrass
-  kivisillutus
-  krundipiir
-  ehitusala piir
-  avalik sissepääs / teeninduskäik





Vari sept.kell 16  
Vari augustis kell 16

Vari sept.kell 16  
Vari augustis kell 16

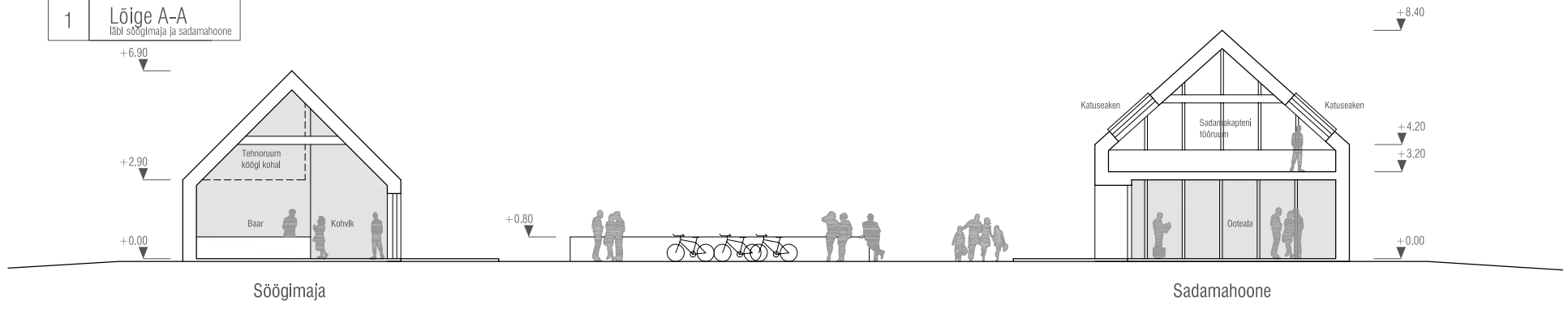
Vari sept.kell 16  
Vari augustis kell 16

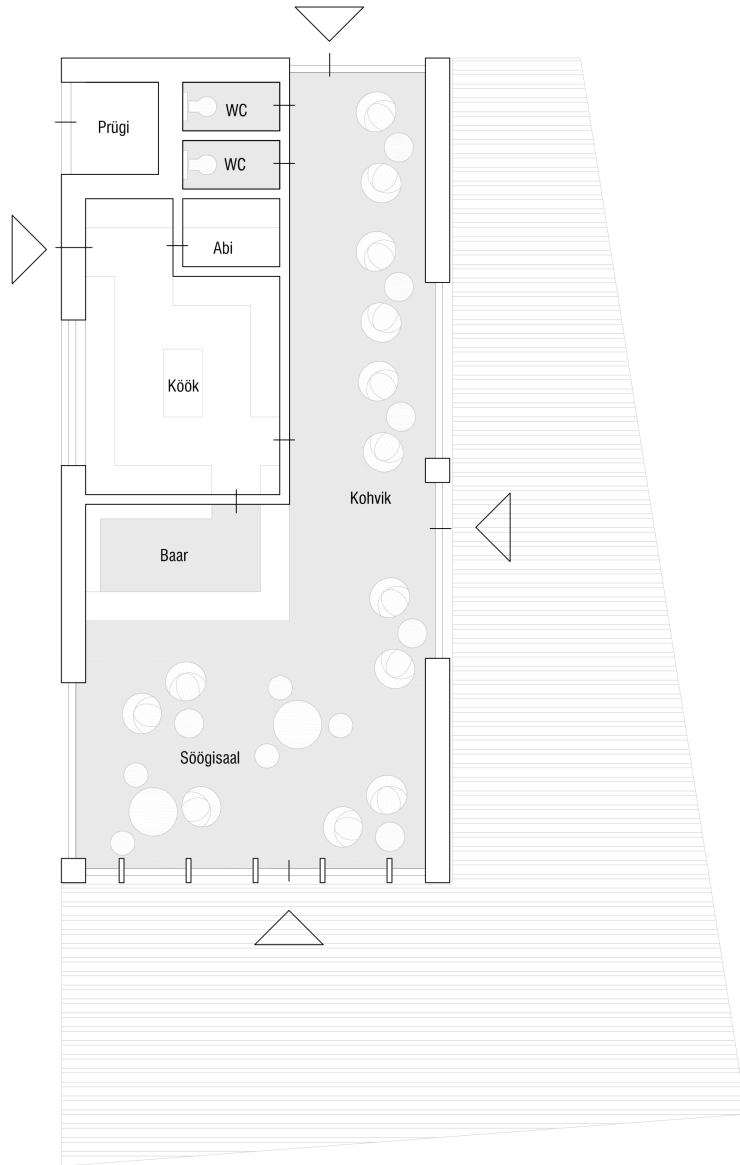
Hõljuki  
parkimisala

X=6444350  
Y=501100

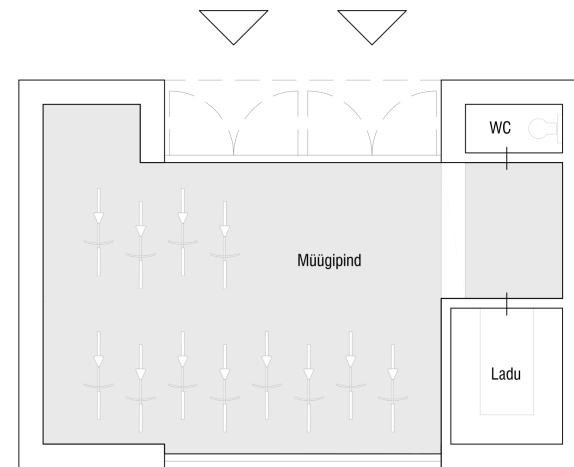


1 Lõige A-A  
läbi söögimaja ja sadamahoone



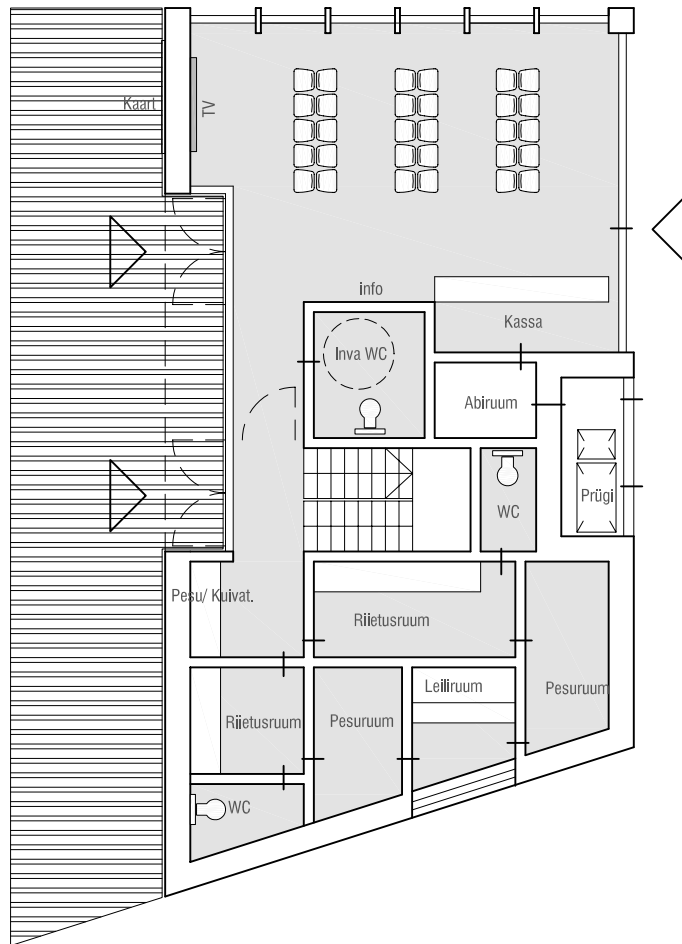


2 Söögimaja  
ehitusala pind 136 m<sup>2</sup>

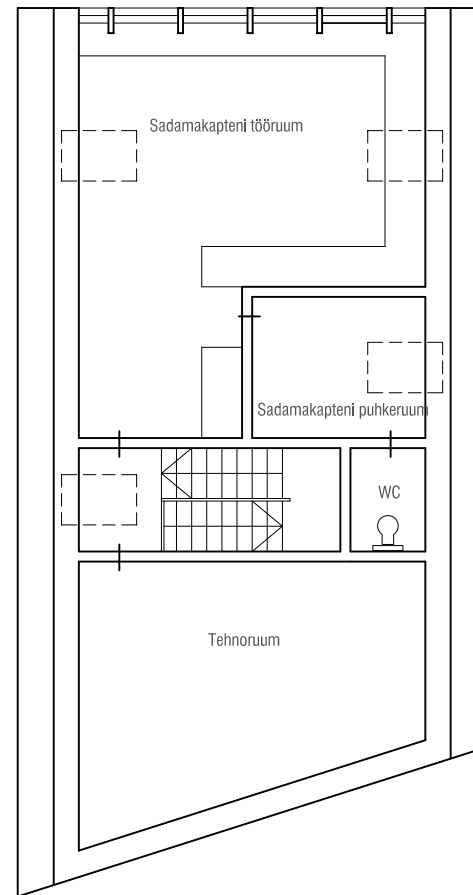


3 Spordipood / laenutus  
ehitusala pind 94 m<sup>2</sup>





4 Sadamahoone : I korrus  
ehitusala pind 150 m<sup>2</sup>



5 Sadamahoone : II korrus

