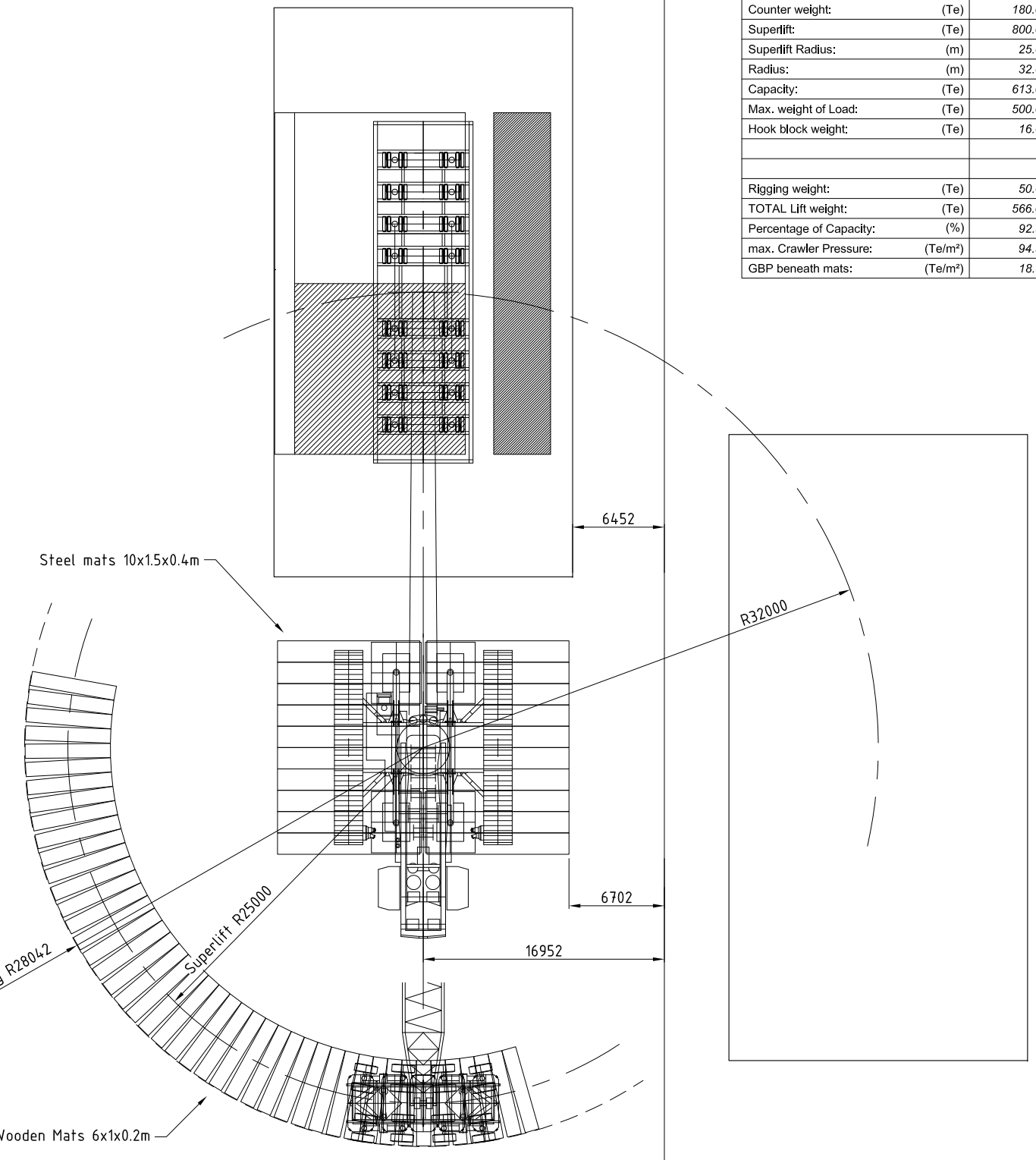
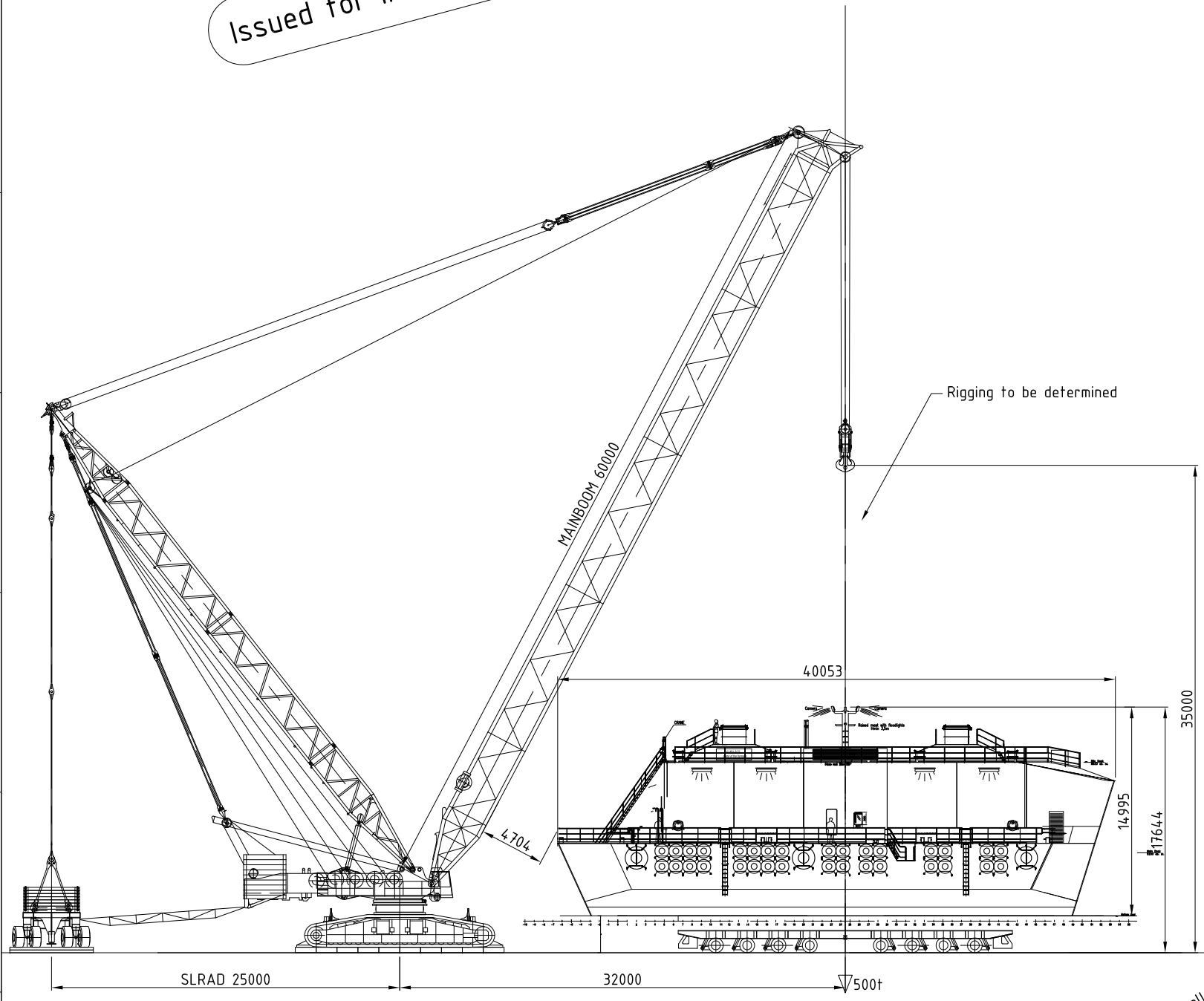


Sideview
1:200

Topview
1:200

Mammoet RK-8500

Issued for information



CRANE INFO:	Mammoet RK8500
POSITION:	Lift Vessel
Lifting Configuration:	SSL
Crawler setup:	10.5m
	(Units)
Boom Length:	(m) 60.0
Jib Length:	(m) n/a
Jib Offset:	(°) n/a
Central counter weight:	(Te) n/a
Counter weight:	(Te) 180.0
Superlift:	(Te) 800.0
Superlift Radius:	(m) 25.0
Radius:	(m) 32.0
Capacity:	(Te) 613.0
Max. weight of Load:	(Te) 500.0
Hook block weight:	(Te) 16.0
Rigging weight:	(Te) 50.0
TOTAL Lift weight:	(Te) 566.0
Percentage of Capacity:	(%) 92.3
max. Crawler Pressure:	(Te/m ²) 94.5
GBP beneath mats:	(Te/m ²) 18.9

CLIENT: TALLINN VESSEL LOADING
 PROJECT: LIFTING SKETCH 500Te VESSEL
 DESCRIPTION: TALLINN VESSEL LOADING LIFTING SKETCH 500Te VESSEL

MAMMOET

THIS PUBLICATION REMAINS THE PROPERTY OF THE PUBLISHER AND SHALL BE TREATED AS CONFIDENTIAL, UNLESS CONTRACTUALLY SPECIFIED OTHERWISE. NO PART OF IT MAY BE REPRODUCED, STORED IN A RETRIEVAL SYSTEM OR TRANSMITTED IN ANY FORM OR BY ANY MEANS, WITHOUT THE PRIOR WRITTEN PERMISSION OF THE PUBLISHER. ©2000 MAMMOET

DRAWN: SKoo DATE: 02-05-'18 SKETCH SCALE: 1:200 SIZE: A3 SKETCH NUMBER: 7000188998