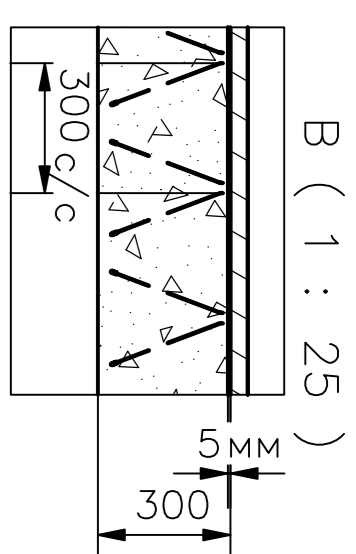
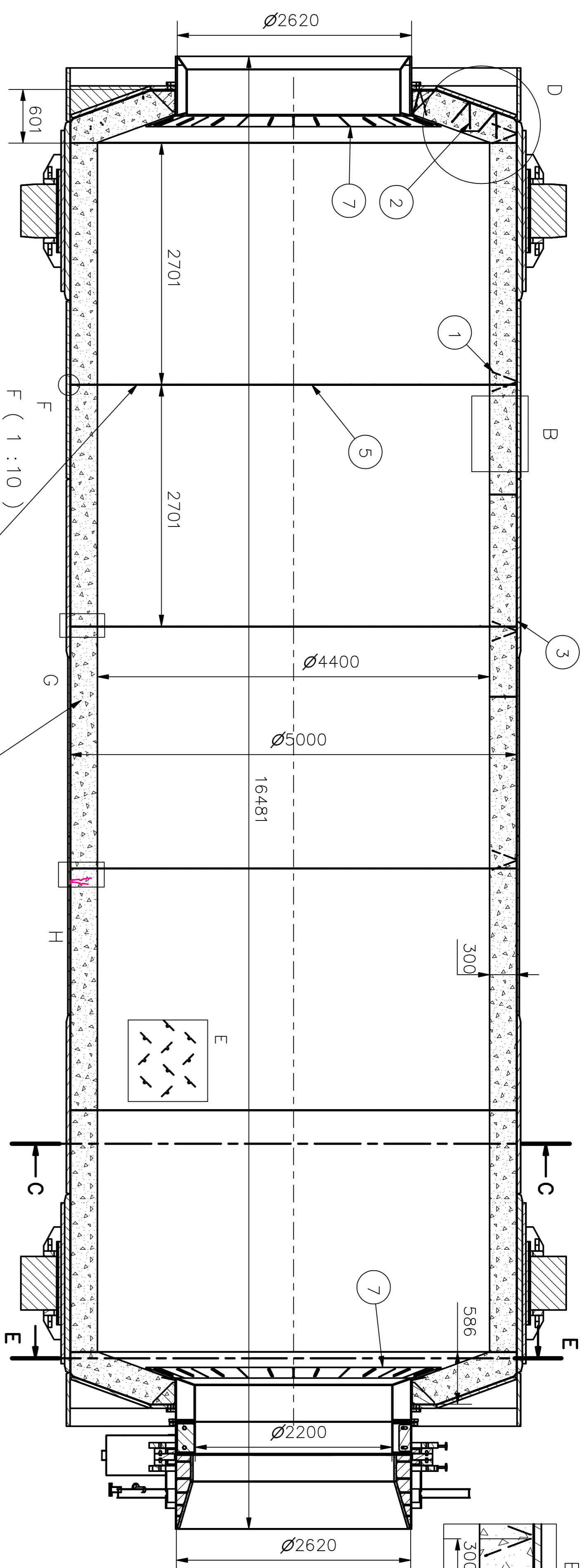
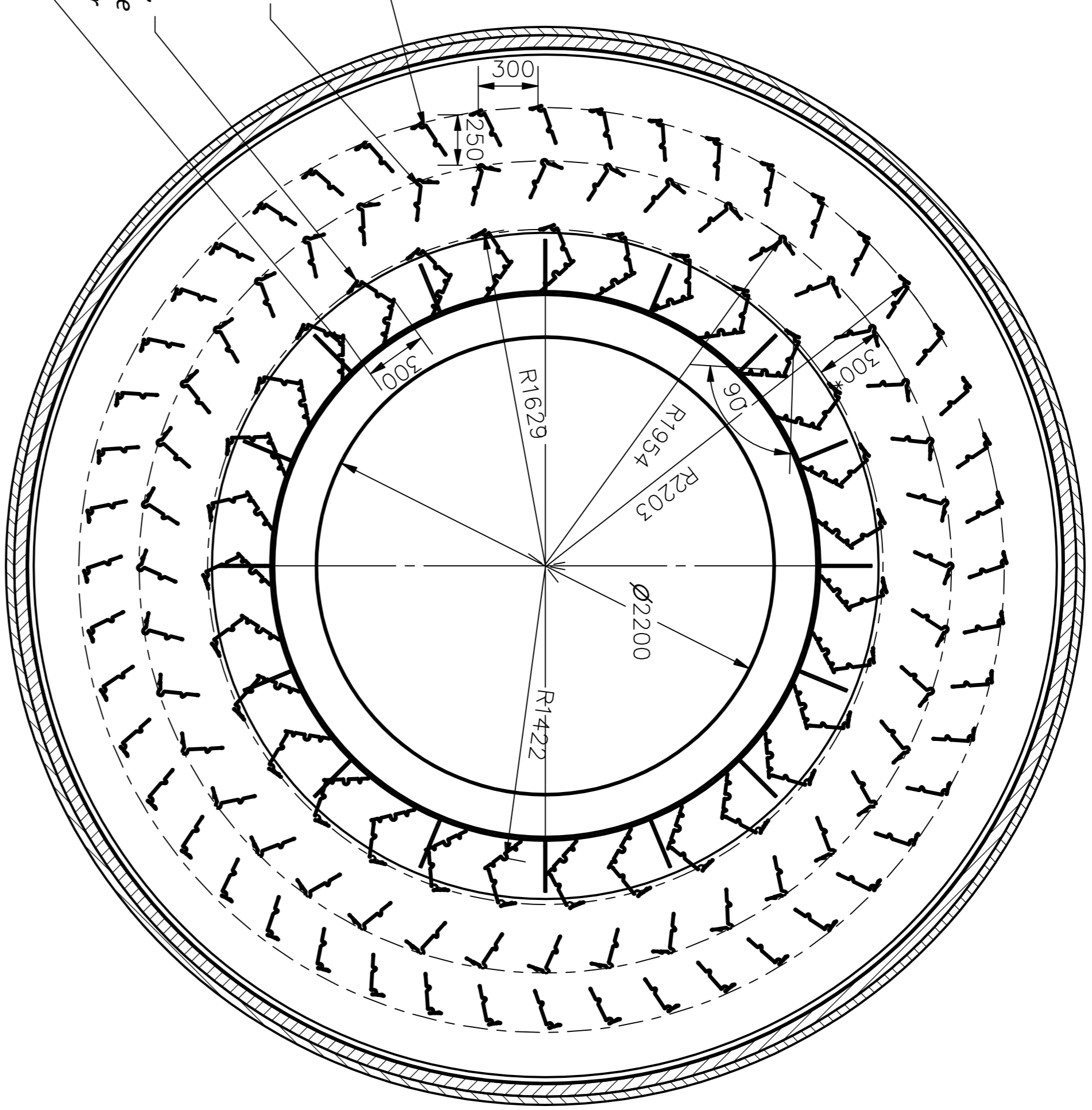


A-A ( 1 : 50 )

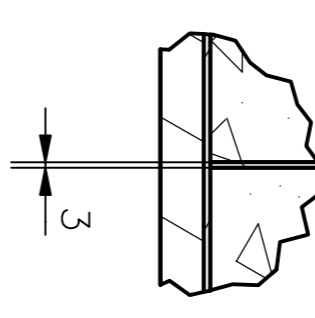
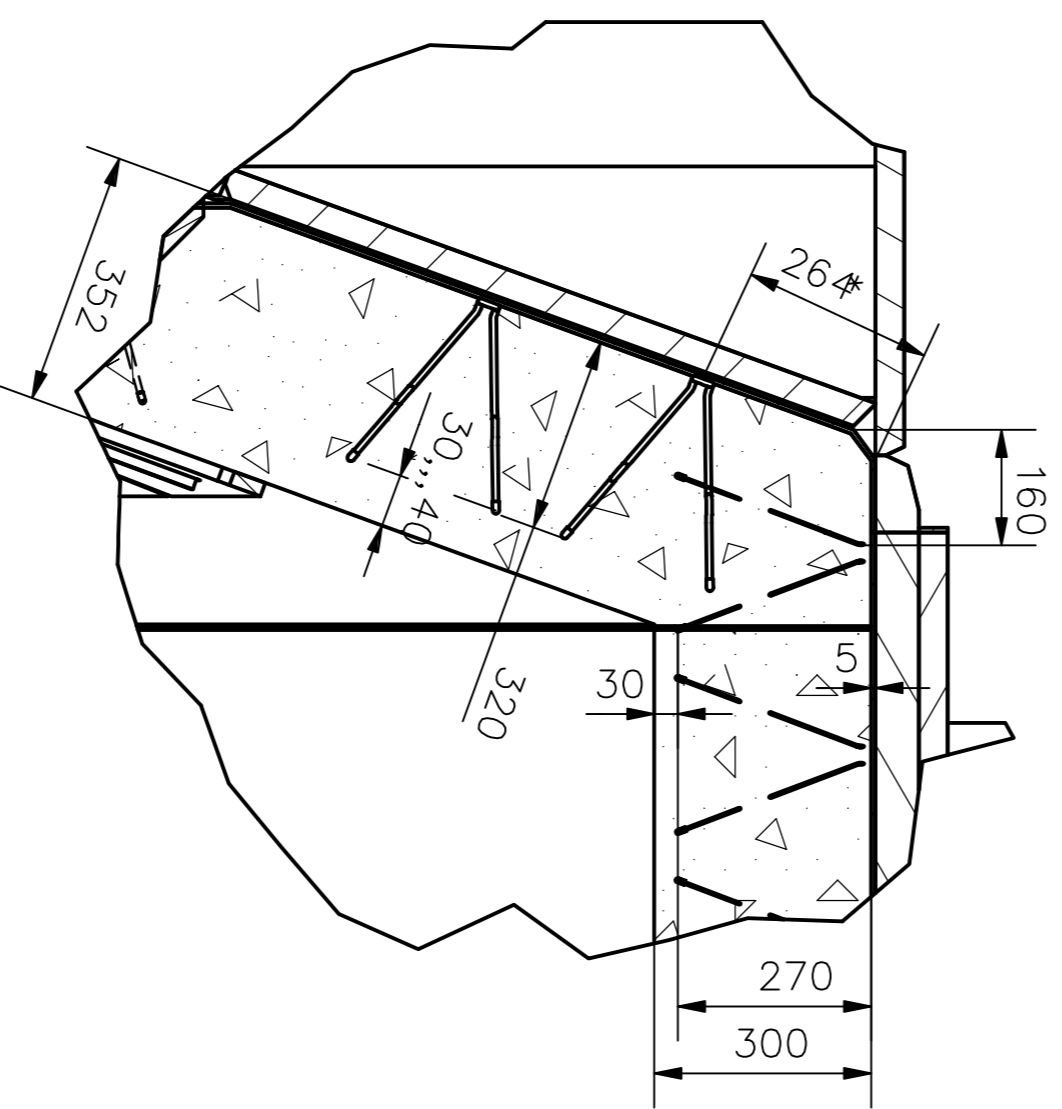


E-E ( 1 : 30 )



Anchor setting layout, end walls

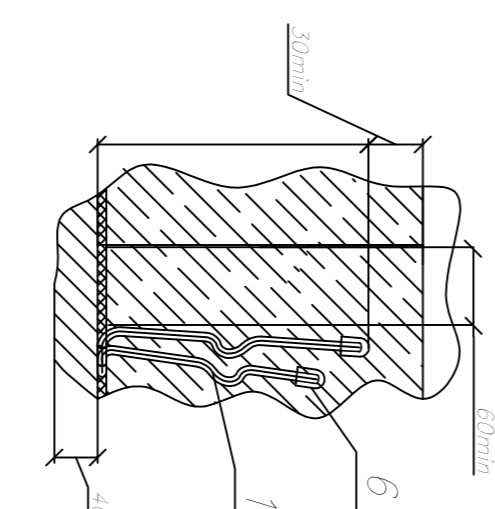
D ( 1 : 15 )  
Anchor setting in the transition section



Inner insulation layer LYTX-236B

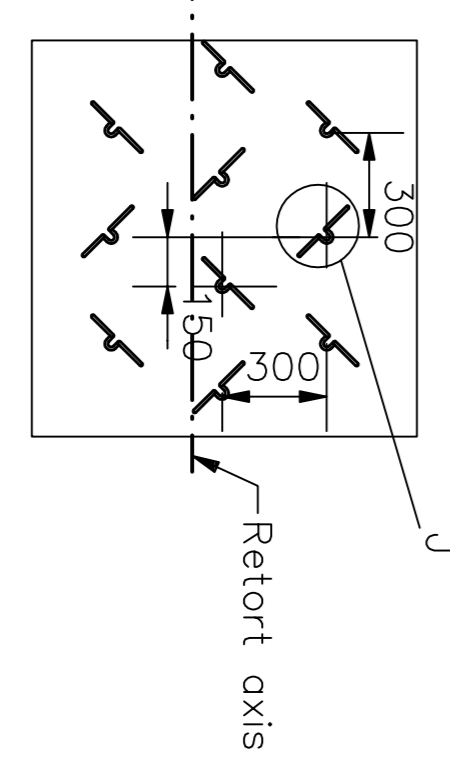
Anchors are omitted for clarity

H ( 1 : 5 )

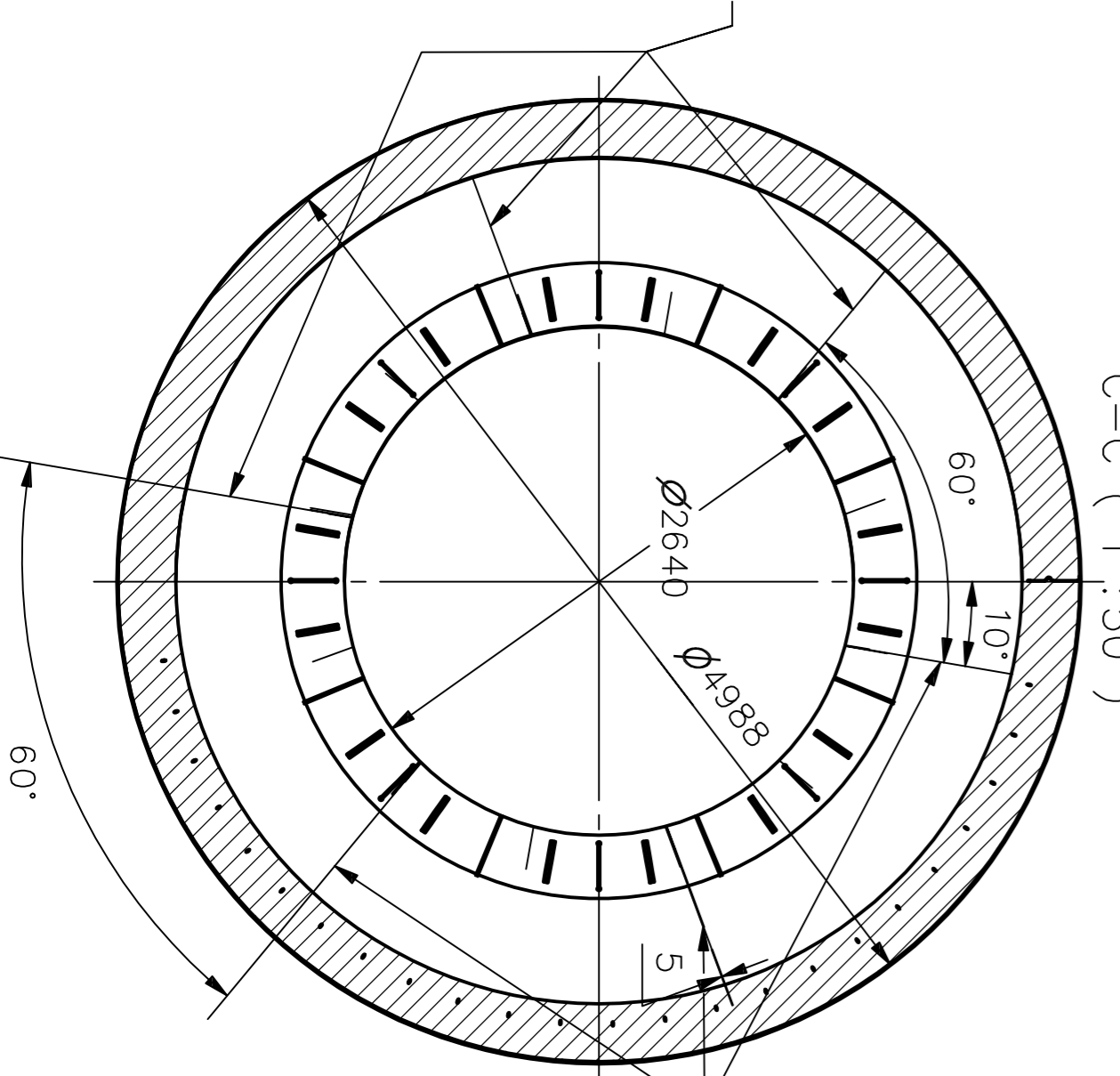


STEELFLEX 1000

E  
Anchor setting layout, retort cylinder



Inner insulation layer LYTX-236B



Inner insulation layer LYTX-236B

- Anchors, type 2, L = 320, 48 pieces, arranged around the circumference at an equal distance of 300 between each other
- Anchors, type 2, L = 320, 42 pieces, arranged around the circumference at an equal distance of 300 between each other
- Anchors, type 2, L = 320, 31 pieces, arranged around the circumference at an equal distance of 300 between each other
- Anchors, type 1, L = 270, 31 pieces, arranged around the circumference at an equal distance of 300 between each other

1. Welded structure. Full length continuous weld. The weld size equals the thickness of the thinner part joined.
2. Weld quality: EN ISO 5817-C
3. Unspecified limit deviations: EN ISO 13920-B, F
4. Unspecified limit deviations: EN ISO 13920-B, F
5. Anchor ribs shall be placed at 45 degrees to the retort body axis and arranged around the circumference at an equal distance from each other.
6. Concrete mix shall be made and cast as per the manufacturer's instructions.
7. Put plastic caps on anchor ends to compensate various thermal expansion of refractory and anchor materials.
8. Anchors located close to the joints between refractory panels shall be arranged at 15 to 30 degrees to the drum cross-sectional plane. The distance from the nearest anchor part to the refractory panels joint surface and fins on the skirt shall be at least 30 mm ensured both with the anchor position and anchor pin cutting or bending normal to the joint or fin surface.
9. Fin and protective skirt rim surfaces shall be pasted over with ceramic fibre paper STEELFLEX 1000 or with similar material with thermal conductivity of 0.023 W/m.K (200 °C).

7	Glue							
7	Protection end plate	MTC-146.100				771,5	1543,	
6	Cap,		plastic					
5	Inner insulation layer S=	30 ceramic fibre LYTX-236B						
			26,52 m <sup>2</sup>					
4	1 Inner insulation layer S =	ceramic fibre STEELFLEX 1000						
			S=254,6m <sup>2</sup> +17,4m <sup>2</sup>					
3	1 Refractory, concrete	XXXXXXX				166834,3	166834,	
			density x t/m <sup>3</sup> )					
2	242 Anchor H-320	MTC-146.002				0,4	84,7	
1	2954 Anchor H-270	MTC-146.001				0,3	714,	
No. QTY	Name	Designation	Material	Standard	(piece)	M. (total)		
Project		Retort refractory lining		1Enefit-140		Moss, Kg		
Ennefit		Energetoormine		KKS code		170944		
TITLE		Refractory lining Retort		Scale		1 : 50		
Performers	Signature	Date						
Drawn	Maksim-Holjovik	16.12.2016						
Checked	S. Yurkov							
Approved								
Approved	A.Stolbov							
Dwg. Nr.		MTC146.000-ENG		Page/Pog		1 /		
REV		1		REV		1		