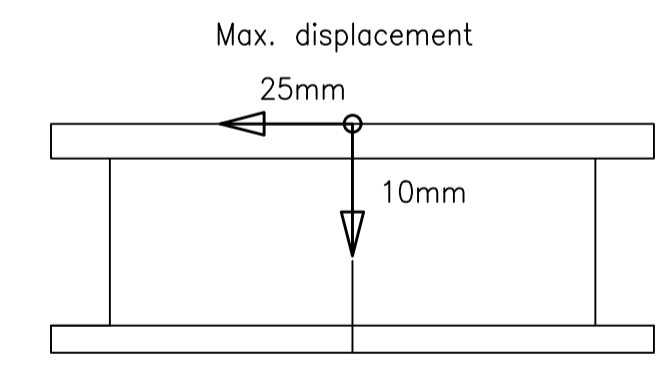
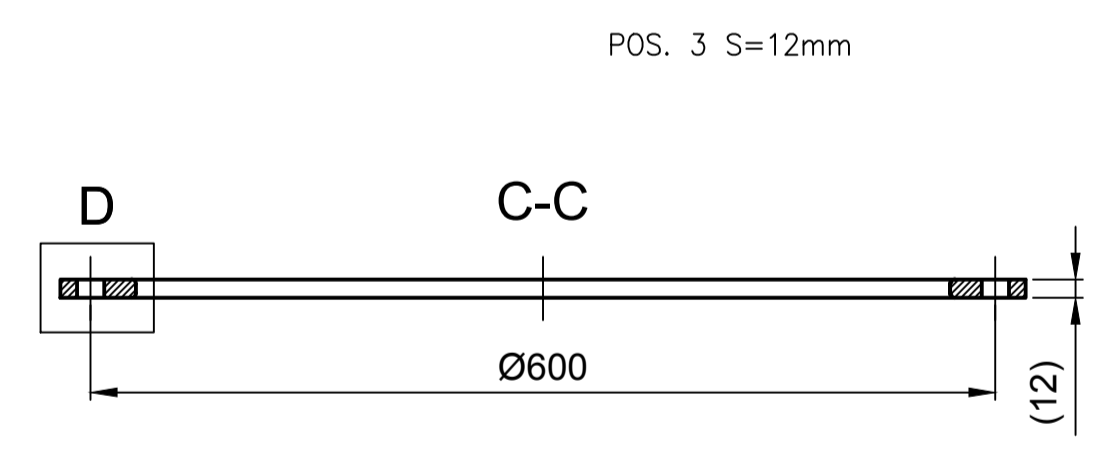
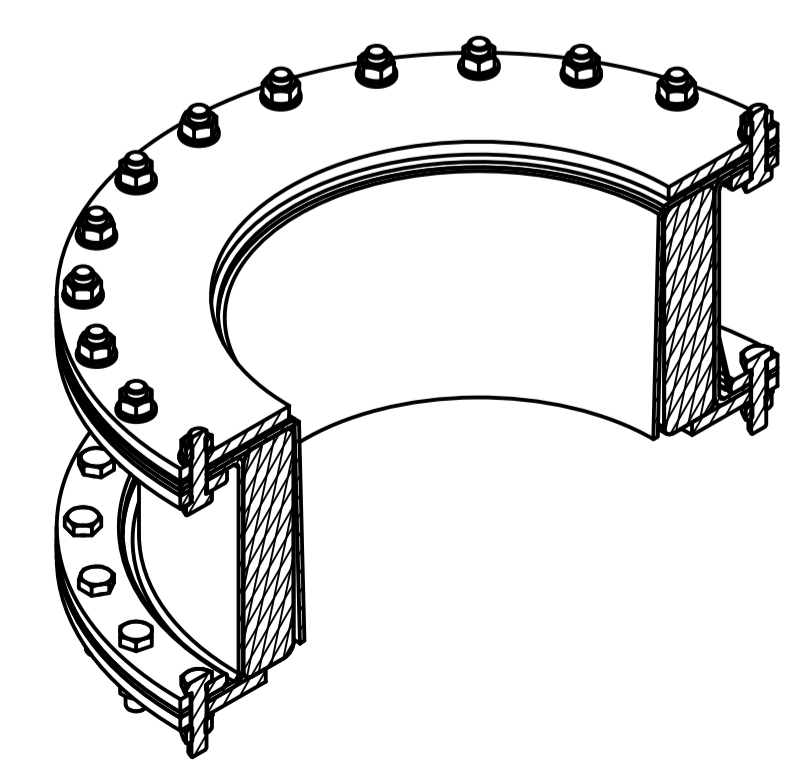
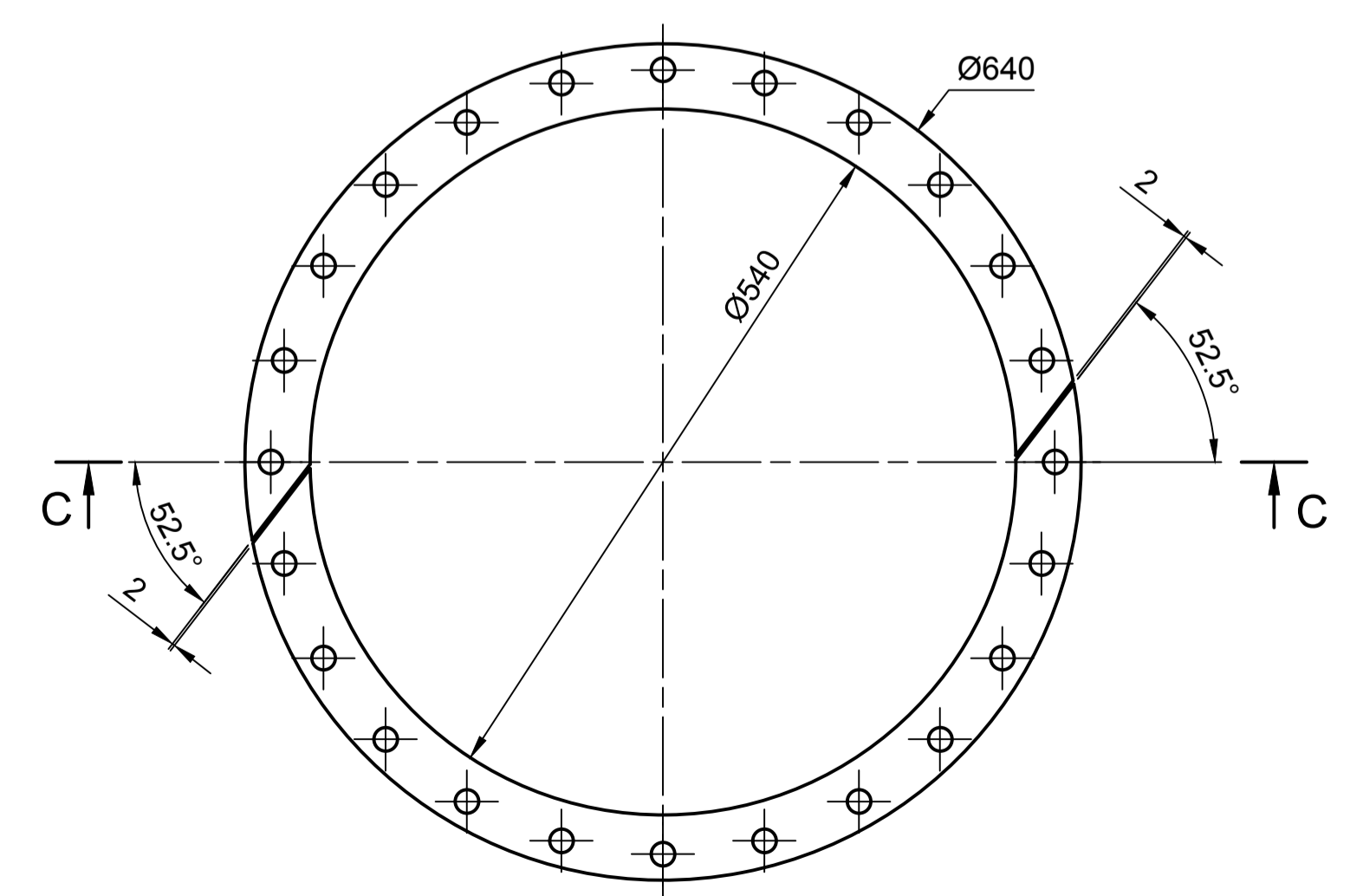
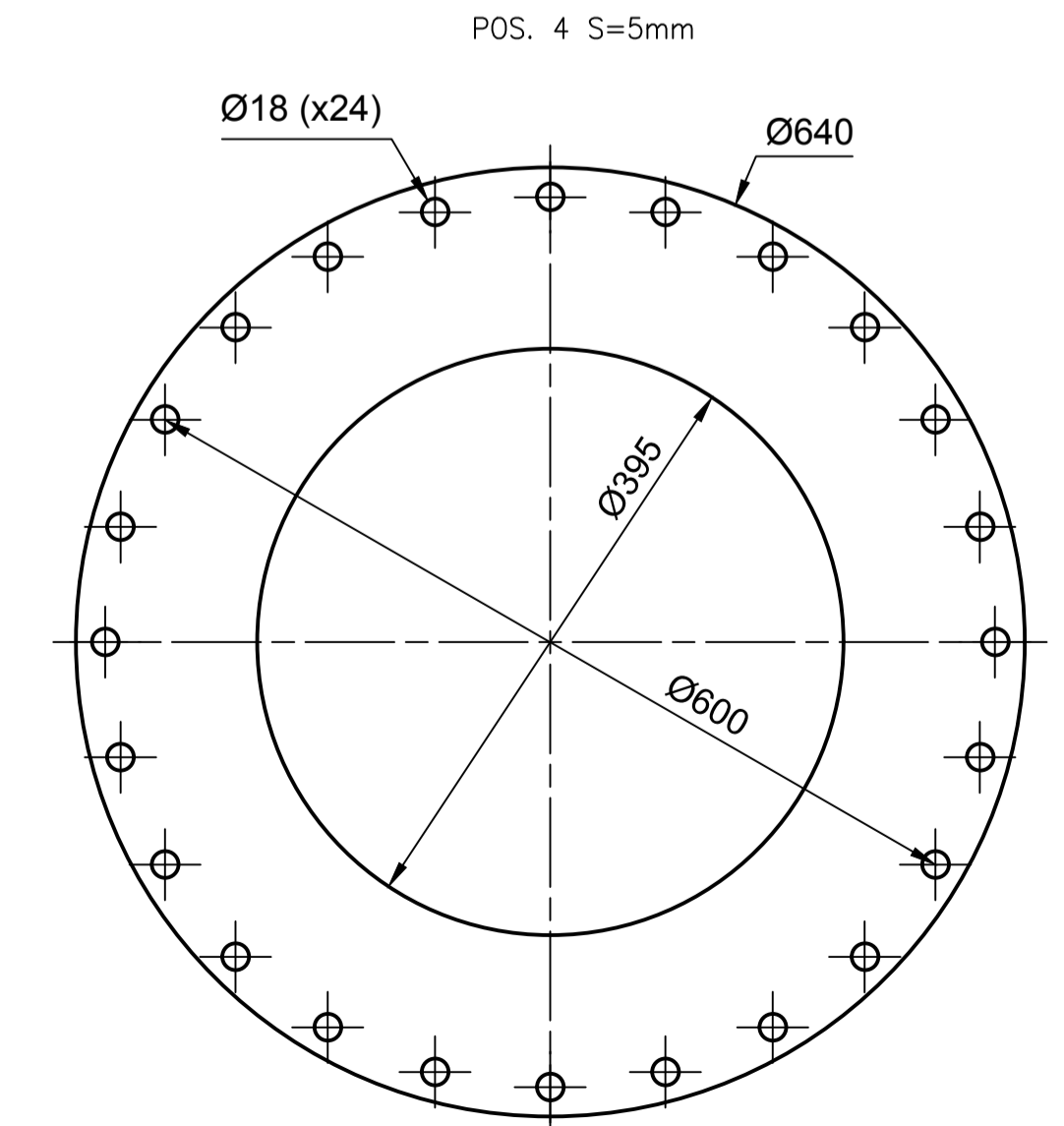
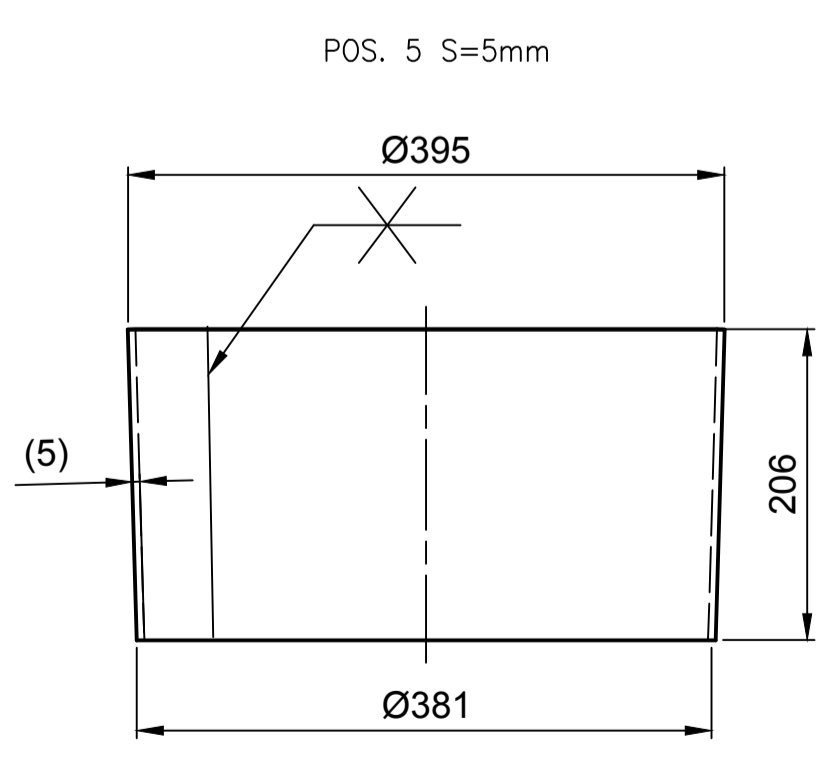


1. () Размеры справочные.
2. Неуказанные допуски DIN 2768-c-L.
3. Допуски на сварку EN13920-B-F
4. Качество сварных соединений EN ISO 5817-C.



TECHNICAL SPECIFICATION

No	Parameter	Value	Unit
1	Conveyed material	Fly ash	
2	Grain size	0.03-0.05	mm
3	Material density	600	kg/m ³
4	Operating temperature	600	°C
5	Design temperature	800	°C
6	Operating overpressure	120	mbar
7	Design overpressure	250	mbar



POS.	DESCRIPTION	QUANTITY	MATERIAL	STANDARD	MASS
11	WASHER 16	48	FSt-tZn	DIN125	
10	NUT M16	48	8-FSt-tZn	DIN934	
9	BOLT M16x60	48	8.8-FSt-tZn	DIN931	
8	GASKET	1	s=3 Klingersil C4400		
7	HEAT INSULATION	1	S=50...60 mm		3
6	EXPANSION JOINT	1			2
5	SHELL	1	S=5 mm 16Mo3		10
4	FLANGE	1	S=5 mm 16Mo3		8
3	FLANGE	2	S=12 mm 16Mo3		16
2	FLANGE	1	S=12 mm 16Mo3		14
1	FLANGE	1	S=12 mm 16Mo3		18

Enefit EnergetiFootmine AS

Project: Установка шнека котла-утилизатора

Order: Enefit-280

KKS code: GA01-RR022 / GA01-RR023

Title: EXPANSION JOINT

DWG No: E0190.21.00

Scale: 1 / 1

Page / Pages: 1 / 1

Mass: 71 kg

Rev: 00