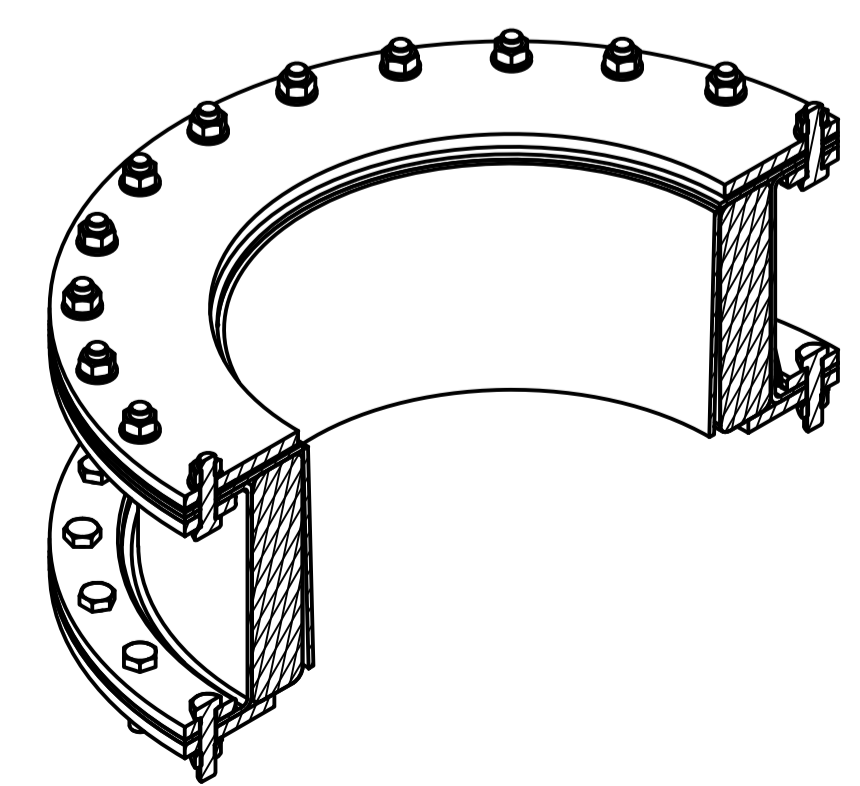
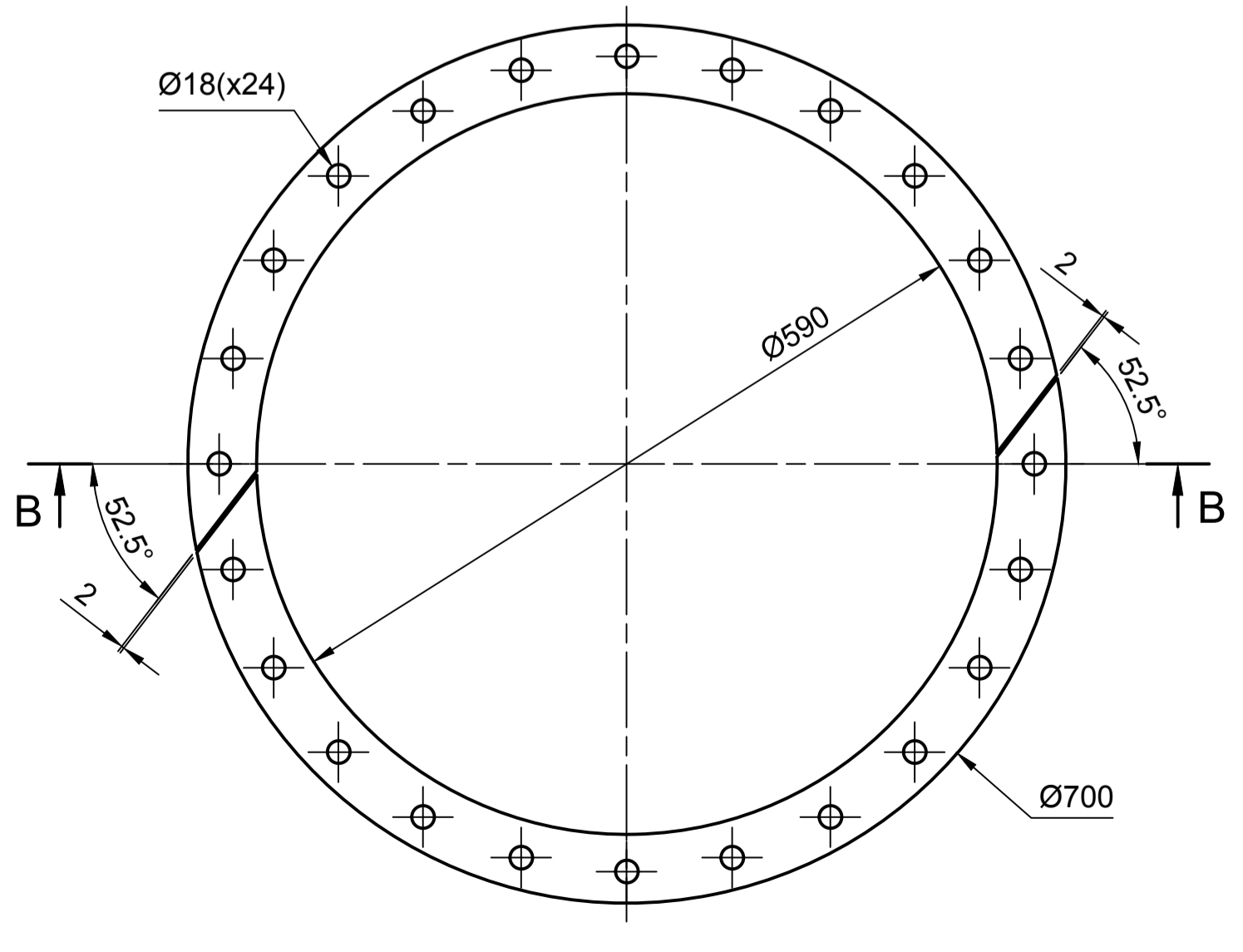
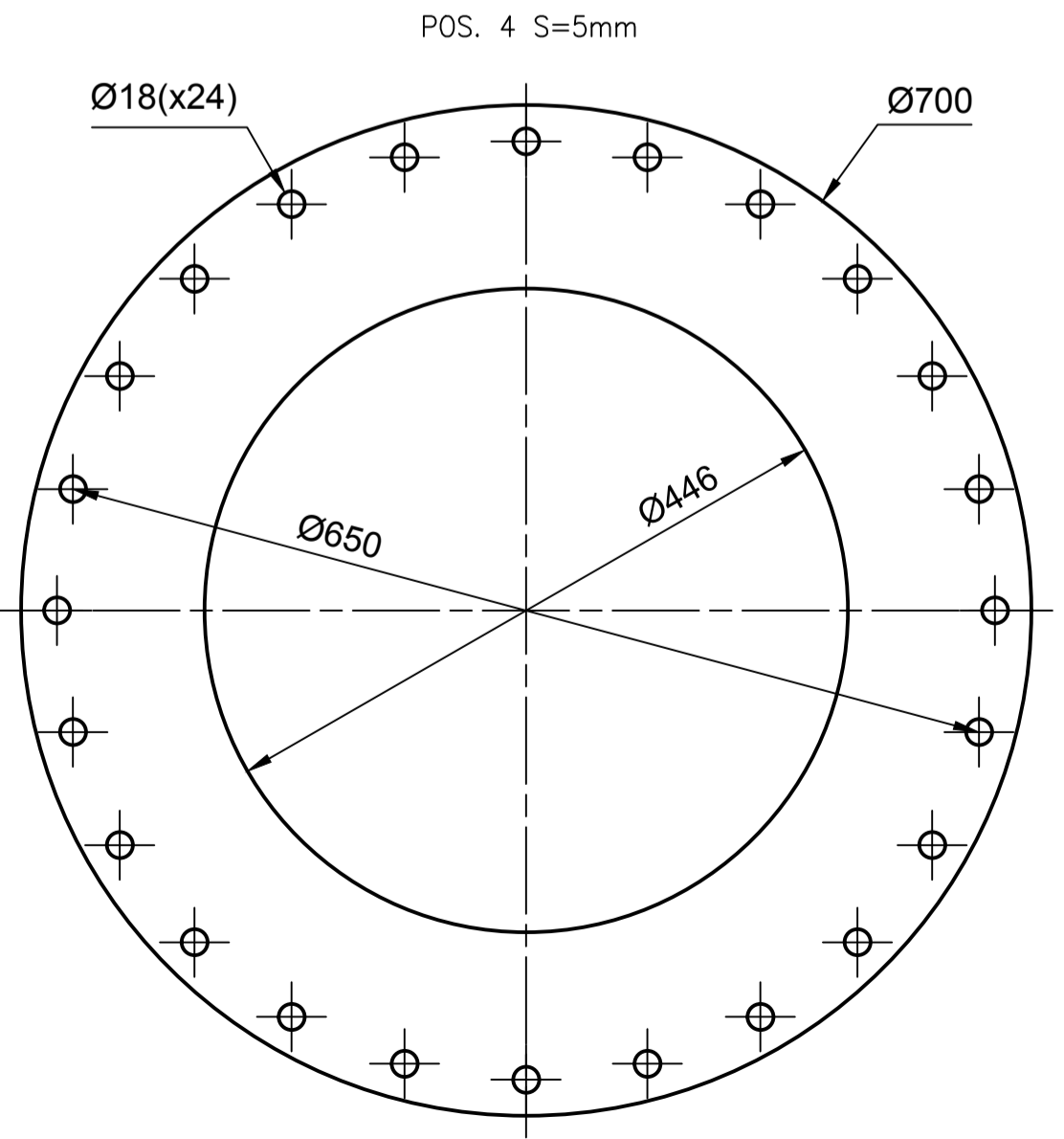
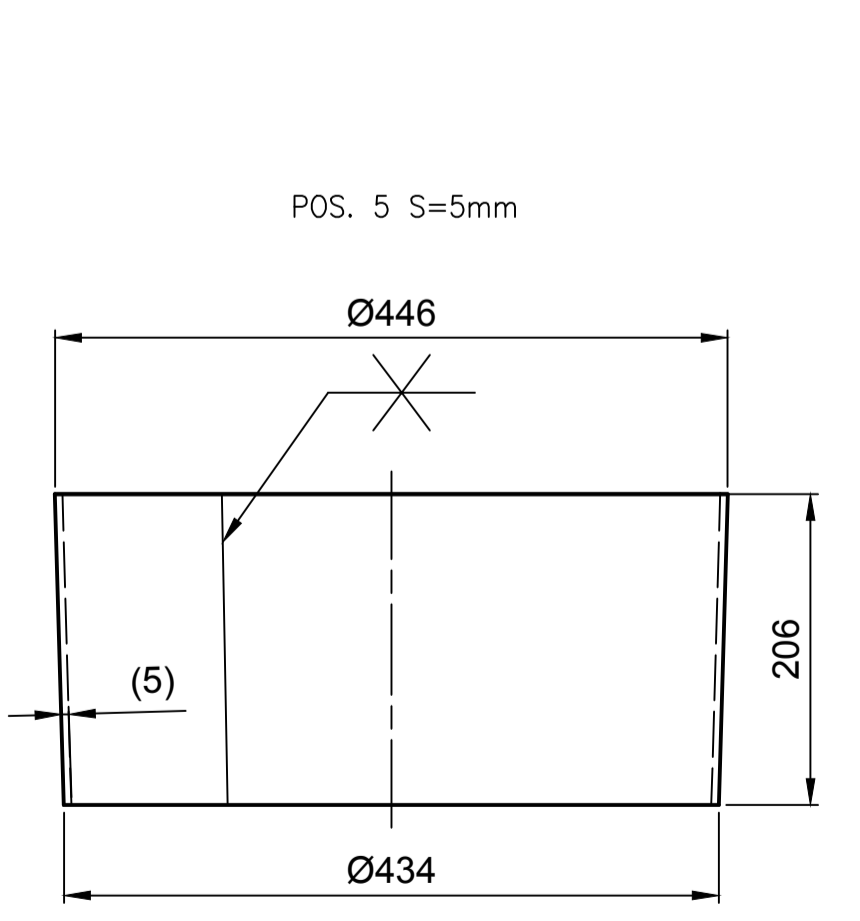
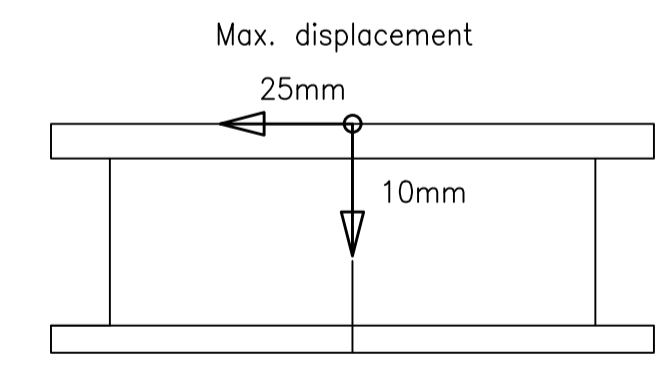
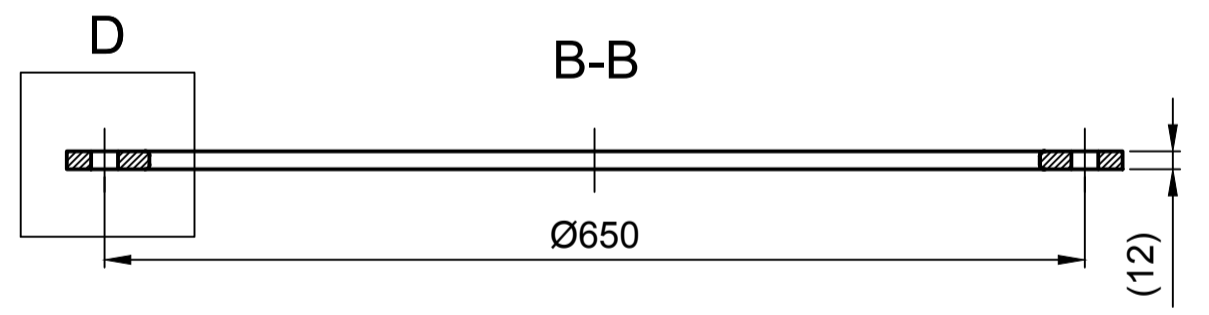
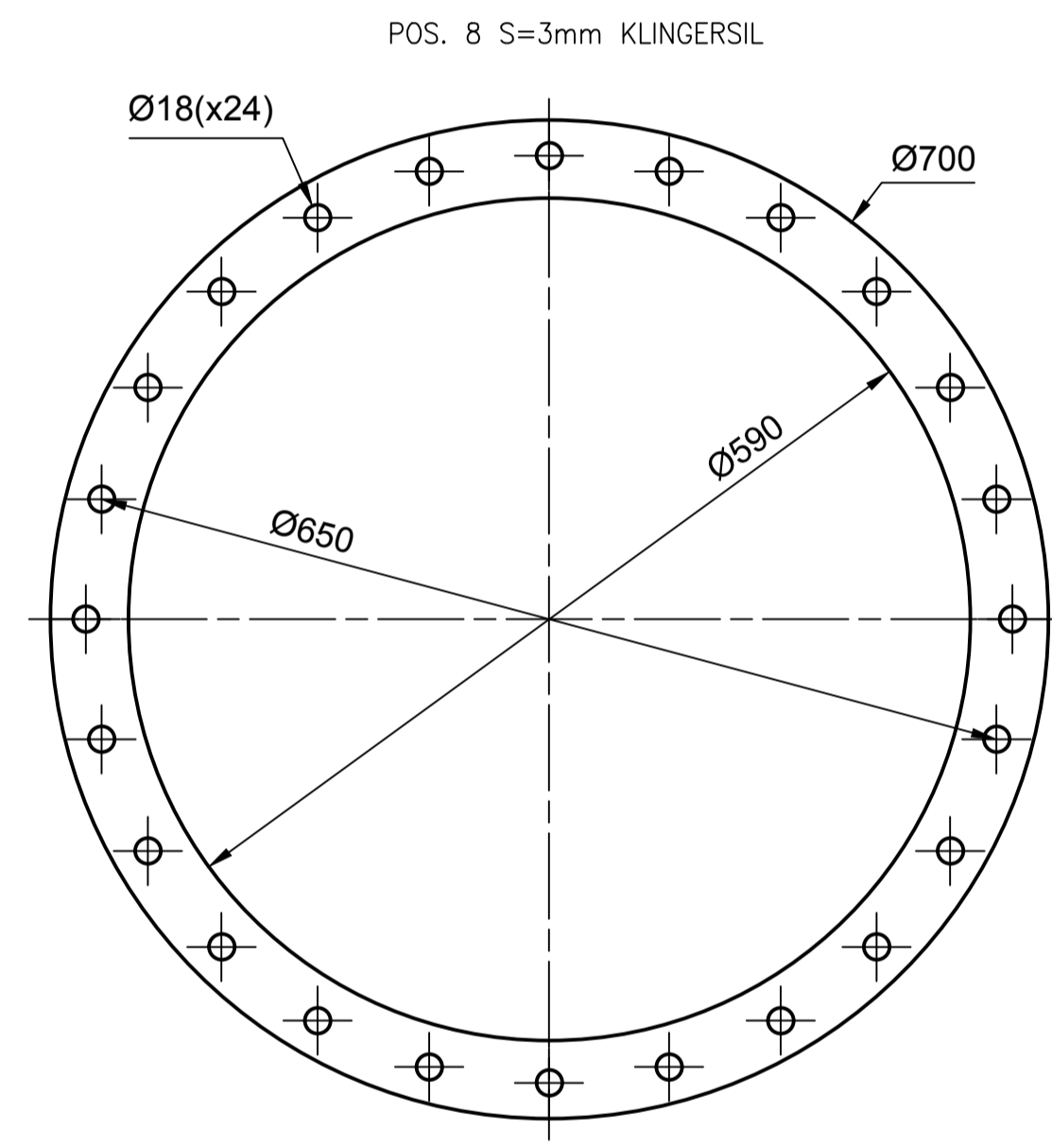


POS. 3 S=12mm



1. () Размеры справочные.
2. Неуказанные допуски DIN 2768-c-L.
3. Допуски на сварку EN13920-B-F
4. Качество сварных соединений EN ISO 5817-C.

TECHNICAL SPECIFICATION

No	Parameter	Value	Unit
1	Conveyed material	Fly ash	
2	Grain size	0.03-0.05	mm
3	Material density	600	kg/m ³
4	Operating temperature	600	C°
5	Design temperature	800	C°
6	Operating overpressure	120	mbar
7	Design overpressure	250	mbar

POS.	DESCRIPTION	QUANTITY	MATERIAL	STANDARD	MASS
11	WASHER 16	48	FSt-tZn	DIN125	
10	NUT M16	48	8-FSt-tZn	DIN934	
9	BOLT M16x60	48	8,8-FSt-tZn	DIN931	
8	GASKET	1	s=3 Klingsil C4400		
7	HEAT INSULATION	1	S=50...60 mm		3
6	EXPANSION JOINT	1			2
5	SHELL	1	S=5 mm 16Mo3		11
4	FLANGE	1	S=5 mm 16Mo3		9
3	FLANGE	2	S=12 mm 16Mo3		20
2	FLANGE	1	S=12 mm 16Mo3		16
1	FLANGE	1	S=12 mm 16Mo3		20

Enefit Energiatootmine AS

Project: Установка шнека котла-утилизатора

Order: Enefit-280

KKS code: GA01-RR024

Title: EXPANSION JOINT

DWG No: E0190.4.1.00

Scale: A1

Page / Pages: 1 / 1

Rev: 00

Drawn: Sergei Jepifanov, 15.05.2017

Checked: Sergei Yurkov

Approved: Andrei Stolbov