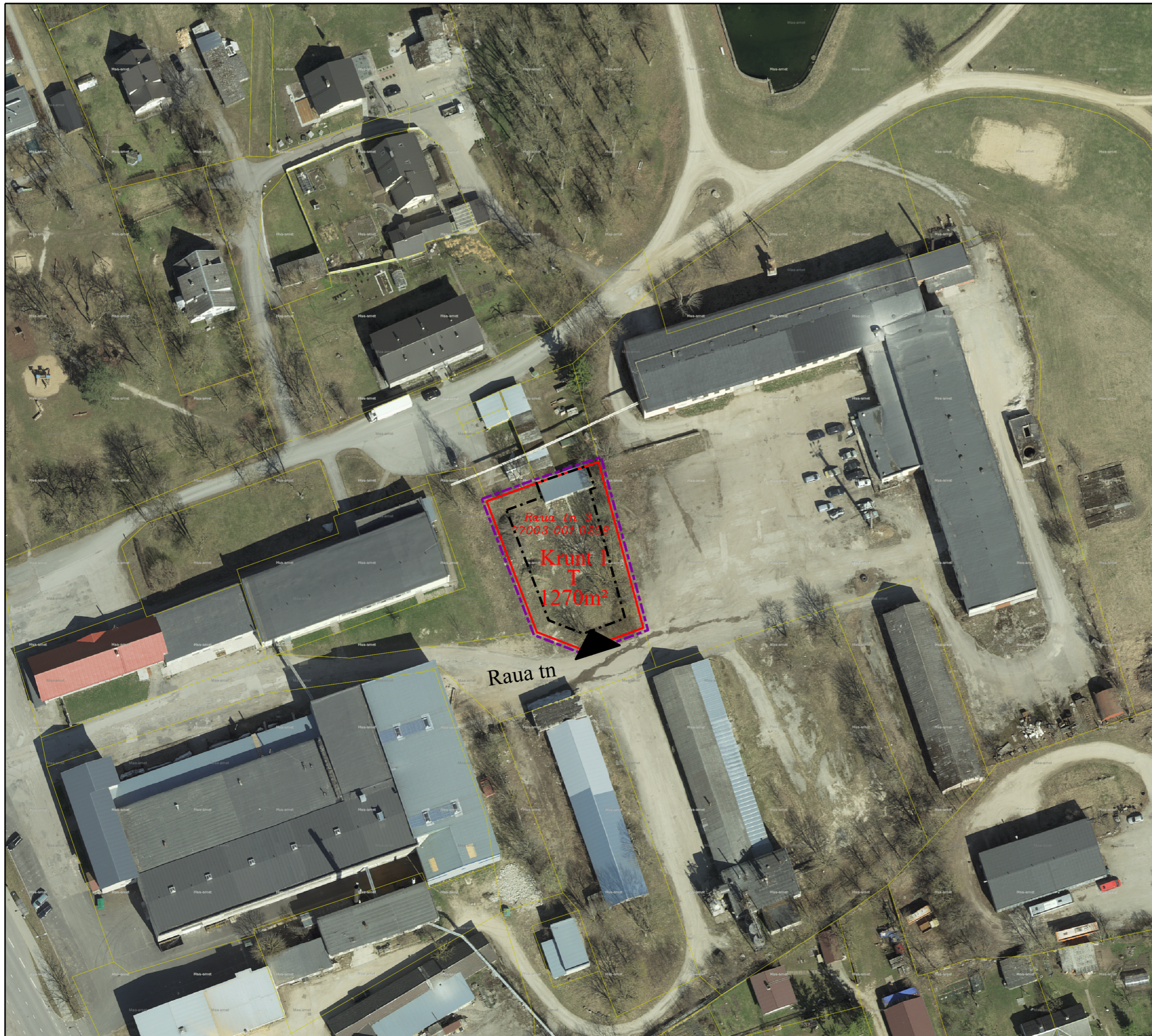
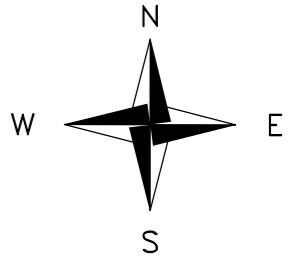




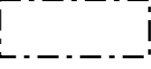



# Rakvere vald, Sõmeru alevik RAUA TN 3 KINNISTU DETAILPLANEERING

ESKIIS 1:1000



-  planeeringuala piir
-  ol.ol. katastriüksuse piir
-  Raua tn 3
-  77003:001:0258
-  plan. krundi hoonestusala
-  plan. juurdepääs krundile

- 1) Krundile planeeritakse kuni 2 hoonet.
- 2) Hoonete maksimaalne kõrgus kuni 9m (või vastavalt ÜP-le).
- 3) Korruselisus kuni 2.
- 4) Hoonestusala on märgitud joonistele maksimaalsena (4 m krundi piirist), kuid seda täpsustatakse planeeringu lahendusega.